



9 INTERNATIONAL BIENNIAL OF LANDSCAPE ARCHITECTURE  
ROSA BARBA INTERNATIONAL  
LANDSCAPE PRIZE

A QUICK TUTORIAL TO CHECK YOUR INSCRIPTION!

1 ..... Team and Project Registration

2 ..... Right released & Payment page

# 1.....Team and Project Registration

## STEP 0

Check if your name is already in our database!

## STEP 1

Put your society name (optional!)

## STEP 3

Put your collaborators information (name, surname and function).



## STEP 4 ENTER YOUR PROJECT INFO!

- | **Articulation** | projects of connection, as infrastructure, large streets or even green spaces between buildings;
- | **Transition** | projects “hinge” between two different systems (river/city, sea-city);
- | **Regeneration** | projects of restoration, re-planting, re-use of landscape
- | **Intersection** | squares, point of intersection in the city.

**Compulsory information** is marked with (\*).  
We suggest to fill correctly all the optional fields in order to offer the Jury the most complete project information.

## STEP 6 UPLOAD YOUR PROJECT

It must be 12x20cm or 20x12cm (portrait or landscape format).

Just **JPG** or **PNG**, 300 dpi.

You **must** upload at least 3 images of the project!



## STEP 2 ENTER AUTHORS INFO!

You can add different authors (holder-1,2,3 etc..).

**Compulsory information** is marked with (\*).  
All the fields corresponding to the holder-1 must be completed!  
You can choose the information to enter for the other holders!

REMEMBER TO UPLOAD YOUR PICTURE! It must be 12x20cm (portrait format), jpg or png 300dpi.

## STEP 5

Introduce a little summary of your project (preferably in English), 1000 characters.

## STEP 7

Read and **accept** the legal condition.

SEND YOUR SUBMISSION, clicking on **Send** button!

Just wait few seconds and you will be led to a second page.

# 2.....Right released & Payment page

## STEP 8 THE RIGHT RELEASED

To publish your project we need the **RIGHT RELEASE OF THE SUBMITTED MATERIAL.**

1 - **DOWNLOAD** the .doc document and complete it with the name of the pictures you sent us and the signature of the author.

2- **Upload file** the completed **RIGHT RELEASED** through the button

Make sure there is the author signature!



## STEP 9 THE PAYMENT METHODS

To finalize your submission you have to do the payment of the **registration fee.**

**60€ EXCLUDING VAT(12,60€).** The final amount payable is **72,60€.**

### 1- ONLINE PAYMENT

Through your credit card.



Complete the field with your data and finalize the payment.  
If the payment was successful you will automatically receive a copy of the **INVOICE** to your e-mail address.

### 2- A BANK TRANSFER

BIC/SWIFT: CASDESBB  
IBAN ES58 3183-0800-85-0000004234  
Addressed to “COAC-Biennal de Paisatge”

Type on the concept your NAME, SURNAME, ID NUMBER (\*for the Spanish “numero de colegiado” or NIF) and PROJECT CODE (you visualize it in the payment page and in the email we sent you! )

REMEMBER TO UPLOAD YOUR **RECEIPT OF THE PAYMENT.**

We will send you a copy of the invoice.

# How to subscribe your project to Rosa Barba International Landscape Prize

## step by step!

**FIRST PAGE**

# Team and Project Registration



### 1) WHERE CAN I FIND THE ON-LINE FORM INSCRIPTION?

The on-line form is available at the web site: [www.coac.net/landscape](http://www.coac.net/landscape)

Select in the left part: ROSA BARBA PRIZE, and then REGISTRATION or directly go to the page : [http://www.coac.net/landscape/premi\\_e.html](http://www.coac.net/landscape/premi_e.html)

You can find the registration form in different languages ( English, Spanish, Catalan and Chinese). Select the language you prefer. We are ready to start!

**REGISTRATION PAGE IS ON THE LEFT SIDE** (indicated by a red arrow pointing to the 'INSCRIPCIÓ' link in the menu)

**YOU CAN CHANGE THE LANGUAGE FROM HERE** (indicated by a red arrow pointing to the language selection dropdown menu)

Menu items: LA BIENNAL, **PREMI ROSA BARBA**, REGLAMENT, **INSCRIPCIÓ**, COMISSIÓ EXECUTIVA I JURAT, ANTERIORS EDICIONS, SOL·LICITUD D'INFORMACIÓ, PREMI INTERNACIONAL DE PROJECTES UNIVERSITARIS A ESCOLES D'ARQUITECTURA I PAISATGE I EXPOSICIÓ INTERNACIONAL, ENLLAÇOS EXTERNS, ARXIU DIGITAL DELS TREBALLS SELECCIONATS EN ANTERIORS BIENNALS, COMPRAR LLIBRE 8a BIENNAL

Language selection: Català, Castellano, **English**, 中文

**CONTACTE**  
IX BIENNAL INTERNACIONAL DE PAISATGE DE BARCELONA  
Seu COAC  
Plaça Nova 5, 2a planta.  
08002 Barcelona / Catalunya /Espanya  
T:+34 93 552 08 42  
+34.93.306.78.00 (ext. 231 i 352)  
Seu ETSAB  
Diagonal 649, 5ª planta  
08002 Barcelona / Catalunya /Espanya  
Telèfon: +34 93 401 64 11  
biennialadm@coac.net  
9biennial@coac.net  
biennial.paisatge@upc.edu  
<http://www.coac.net/landscape>  
<http://arquitectes.cat/landscape>  
Coordinadora:  
Marina Cervera i Alonso de

### STEP 0: IS IT YOUR FIRST WORK SENT TO ROSA BARBA PRIZE?

If the answer is NOT, it means you have already sent an inscription to the Rosa Barba Prize, this year or in the past editions and we will probably have your information saved. Just check it, [INTRODUCING YOUR SURNAME](#). If your name is on the list, the system will ask you to introduce just your e-mail.

You don't need to fill the gaps of the HOLDER-1, because we already have your data. However if you want to update it, you can change your data introducing again the information. If you don't need to update your data, you can skip this passage and go the HOLDER-2, 3.. Etc.

If your answer is YES, or if the system can't find your surname, you can't avoid any step.

**REGISTRATION TO THE ROSA BARBA PRIZE**  
**9ª Biennial Internacional de Paisatge de Barcelona**

**INSCRIPTION**  
It is your first work?  
 Yes  No

Surname author (3 minimum letters):  **Look for author**

Suggestions:

Introdueix el teu E-mail:

**Seleccionar autor i canviar dades**

If you **already sent** us a project, (in the past biennial editions or in this one) probably we will have your past registration data. Introduce your **surname** to check it!

If you **find your name** in the list, you can select it and go to the **next step**.

You have also the possibility to change your information.

# INSCRIPTION

It is your first work?

Yes  No

Fields marked with (\*) are required.

## 1.- SOCIETY

Company name (if it is necessary) Landscape X Society **Optional!**

## 2.- AUTHOR(S)

### HOLDER-1

(\*) Identity card/ Passport XXXX11111 (\*) Name Mario (\*) Surname Rossi  
(\*) Profession Landscape (\*) Telephone 0000000000 Fax  
(\*) Address  
viale Aldo Moro, 17  
(\*) ZIP code 04100 (\*) Town Roma (\*) Region Lazio  
(\*) Country Italy (\*) E-mail mariorossi@mario.it  
(\*) Web www.mariorossi.it Facebook  
Twitter

Scegli file butterfly.jpg

12x20cm (JPEG/PNG 300dpi)



Warning: if not this format will not be displayed on the web consultation the jury.

**REMEMBER TO UPLOAD AUTHOR PICTURE!! (\*)**

**JUST JPG OR PNG ACCEPTED!!!**

## STEP 1: SOCIETY

Introduce the name of your society. This is an optional field.

## STEP 2: AUTHOR(S)

In this part you should enter the author information. You can enter more than one author, but we need the complete information of at least one of the authors (HOLDER-1). All the fields corresponding to the Holder-1 must be completed! **Compulsory information** is marked with (\*).

If you have a Facebook or Twitter profile, you can add it, but this information is not compulsory. If you decide to introduce them, an automatic link will be created in the page of your project, in the biennial atlas. <http://www.arquitectes.cat/iframes/paisatge/cat/atles.php?lan=cat>

REMEMBER TO **UPLOAD AUTHOR PICTURE!** It must be 12x20cm (portrait format), jpg or png 300 dpi.

**INSERT THE OTHER AUTHORS INFORMATION (You can choose the information you want to add)**

### HOLDER-2 [ocultar]

Identity card/ Passport 12345666 Name Valentino Surname Bianchi  
Profession ingegnere Telephone 1111111111111111 Fax 22222222  
Address via del campo, 3  
ZIP code 89129 Town Reggio Calabria Region Calabria  
Country Italy E-mail bianchino@ino.it  
Web www.bianchino.it Facebook  
Twitter

Scegli file Nessun file selezionato

12x20cm (JPEG/PNG 300dpi)

Warning: if not this format will not be displayed on the web consultation the jury.

**JUST JPG OR PNG ACCEPTED!!!**

### HOLDER-3 [ocultar]

Identity card/ Passport Name Surname  
Profession Telephone Fax  
Address  
ZIP code Town Region  
Country -- COUNTRIES -- E-mail  
Web Facebook  
Twitter

Scegli file Nessun file selezionato

12x20cm (JPEG/PNG 300dpi)

Warning: if not this format will not be displayed on the web consultation the jury.

### HOLDER-4 [mostrar]

### HOLDER-5 [mostrar]

**YOU CAN ADD ANOTHER AUTHOR BY CLICKING HERE!**

If a project has been realized by different authors, you can add the author name and information by clicking "show/mostrar", next to HOLDER-X. We suggest to complete with all the fields. However completing all the fields of the AUTHOR-2, AUTHOR-3 etc is not compulsory. We need at least NAME, SURNAME, EMAIL AND PICTURE.

## STEP 3: COLLABORATORS

Enter your collaborators information (name, surname and function). We don't need the picture of the collaborators

## STEP 4: PROJECT CARD

Now it's time to ENTER your PROJECT information!

We need the name of your project (\*), and the translation of it in English and Spanish. Also in this case compulsory information is marked with (\*). We suggest to fill correctly all the optional fields in order to offer the Jury the most complete project information.

**4.- PROJECT CARD**

(\*) Project name PROVA (COMPULSORY FIELD!)

Project name in English TEST

Project name in Spanish PRUEBA

Award Category -- AWARD CATEGORIE -- Subcategory -- SUBCATEGORY --

Project completion year 2001 (AAAA) Project ending year 2016 (AAAA)

Address Plaça Nova, 5

UTM - Warning: if not this format will not be displayed on the web consultation the jury. 41.384394, 2.17291

Town/Emplacement Barcelona Province/Region Catalunya

Country Spain Surface 1000 Unit of measurement m2

Cost 100€/m2 Specify unit (€/m²) (\$/m²) (€/ha) (\$/ha)

Type of customer  private company  public administration

**SELECT THE CATEGORY AND THE SUBCATEGORY FROM THE LIST (optional fields)**

**DON'T WORRY IF YOU ARE NOT SURE ABOUT THE CATEGORY, WE WILL ENTER THIS INFORMATION FOR YOU! (Optional fields)**

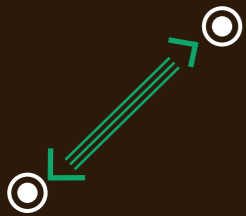
### AWARD CATEGORIES EXPLANATION

The projects submitted to the Rosa Barba International Landscape Prize will be divided in four categories, by the action that the project has on its surrounding. You will find this division in the exposition (that will take place in the COAC from September 29th to October 1st), in the catalogue (that will be published in 2018) and in the Online Biennial Atlas, available at the website :

<http://www.arquitectes.cat/iframes/paisatge/cat/atles.php?lan=cat&lan=en>

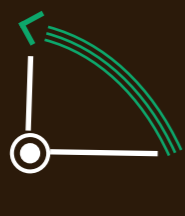
You can have a look to this page, selecting the research for categories, to find some examples of project for each category.

#### Articulation



Projects of connection, as infrastructure, large streets or even green spaces between buildings

#### Transition



Projects "hinge" between two different system (river/city, sea-city), like waterfront or intervention along the river.

#### Regeneration



Projects of restoration, re-planting, re-use of landscape.

#### Intersection



Squares, point of intersection in the city.

### AWARD SUBCATEGORIES

Choose the subcategory from the list. The subcategories define the typology of the project.

**DON'T WORRY IF YOU ARE NOT SURE ABOUT THE CATEGORY, WE WILL ENTER THIS INFORMATION FOR YOU!**

**4.- PROJECT CARD**

(\*) Project name PROVA

Project name in English TEST

Project name in Spanish PRUEBA

Award Category Intersection Subcategory Corporate gardens

Project completion year 2001 (AAAA) Project ending year 2016 (AAAA)

Address Plaça Nova, 5

UTM - Warning: if not this format will not be displayed on the web consultation the jury. 41.384394, 2.17291

Town/Emplacement Barcelona Province/Region Catalunya

Country Spain Surface 1000 Unit of measurement m2

Cost 100€/m2 Specify unit (€/m²) (\$/m²) (€/ha) (\$/ha)

Type of customer  private company  public administration

In the 4th section of the online form, the only compulsory field is the project name (\*). However we suggest to fill correctly all the optional fields in order to offer the Jury the most complete project information.

Project name in Spanish PRUEBA

Award Category Intersection Subcategory Corporate gardens

Project completion year 2001 (AAAA) Project ending year 2016 (AAAA)

Address Plaça Nova, 5

UTM - Warning: if not this format will not be displayed on the web consultation the jury. 41.384394, 2.17291

Town/Emplacement Barcelona Province/Region Catalunya

Country Spain Surface 1000 Unit of measurement m2

Cost 100€/m2 Specify unit (€/m²) (\$/m²) (€/ha) (\$/ha)

Type of customer  private company  public administration

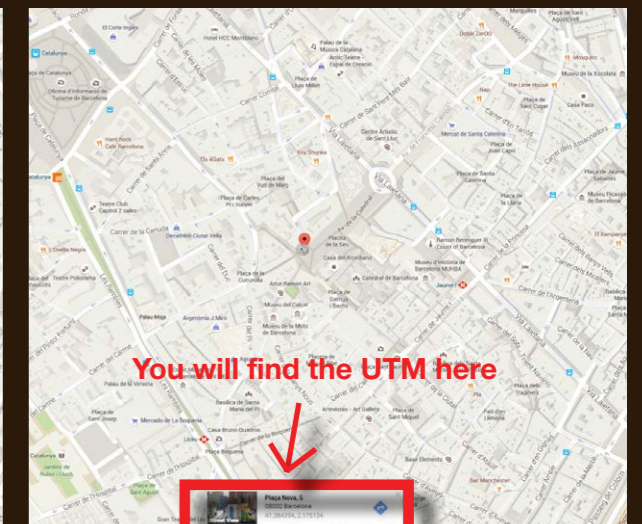
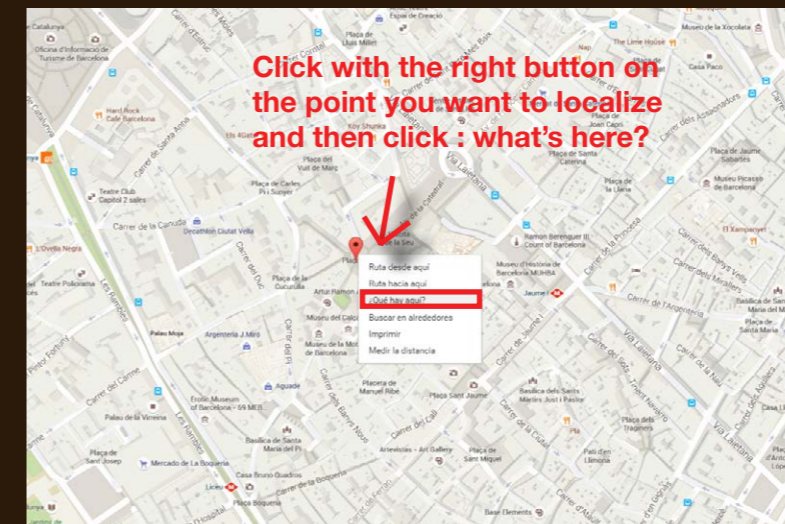
### HOW TO ENTER THE ADDRESS AND THE UTM COORDINATES

We need the complete address and the UTM coordinates to localize the project, in this format:

Address ( name of the street, number )

UTM: 41.384394, 2.17291

You can find it easily on Google map.



Town/Emplacement Barcelona Province/Region Catalunya  
 Country Spain Surface 1000 Unit of measurement m2  
 Cost 100€/m2 Specify unit (€/m²) (\$/m²) (€/ha) (\$/ha)  
 Type of customer private company public administration  
 CLIENT NAME Company X Construction company  
 Site management  
 Maintenance manager Costs of maintenance 20 (€/m²)  
 Other information of interest biabla

**REMEMBER TO SPECIFY THE UNITS OF MEASUREMENT**

### STEP 5: PROJECT SUMMARY

Insert a little text about the project, in which you explain your aims, give a description of the intervention and a valuation of the results reached. The text can't exceed the maximum of 1000 characters, spaces included and it should be preferably in English.

#### 5.- PROJECT SUMMARY

Proposal purpose, project description, valuation of the finished work  
 Remaining characters: 957 / 1000  
 preferably in ENGLISH, max 1000 characters!

### STEP 6:

UPLOAD YOUR PROJECT IMAGES! 12X20 cm ( portrait or landscape format /300 dpi ). Pay attention to the file you upload and to their dimension! The system will not accept the file if they are bigger then 2MB.

#### 6.- GRAPHICAL DOCUMENTATION

**Format of the images:**  
 Color or black and white, 12x20cm (JPEG/PNG 300dpi)  
 Maximum file weight accepted: 2MB.

**JUST JPG/PNG ACCEPTED FORMATS! PAY ATTENTION TO THE FILE WEIGHT (2MB MAXIMUM)**

Scegli file	DSC_0012.JPG	1a
Scegli file	DSC_0013.JPG	2a
Scegli file	DSC_0014.JPG	3a
Scegli file	Nessun file selezionato	4a
Scegli file	Nessun file selezionato	5a
Scegli file	Nessun file selezionato	6a
Scegli file	Nessun file selezionato	7a
Scegli file	Nessun file selezionato	8a
Scegli file	Nessun file selezionato	9a

**COMPULSORY MINIMUM DOCUMENTATION:**  
 3 images of the project.

**DOCUMENTATION RECOMMENDED TO PROVIDE:**

- plan of situation
- Images from aerial view of before and after the intervention
- General plan of the project, sections, constructive details...
- Process of the project: schemes, notes...
- Photos of details of the project and any other information that may be descriptive about the project.
- 2 photos of project details

### STEP 7:

If you have completed correctly all the form, now it's the time to submit it. Just read and accept the legal conditions, and click on the SEND button.

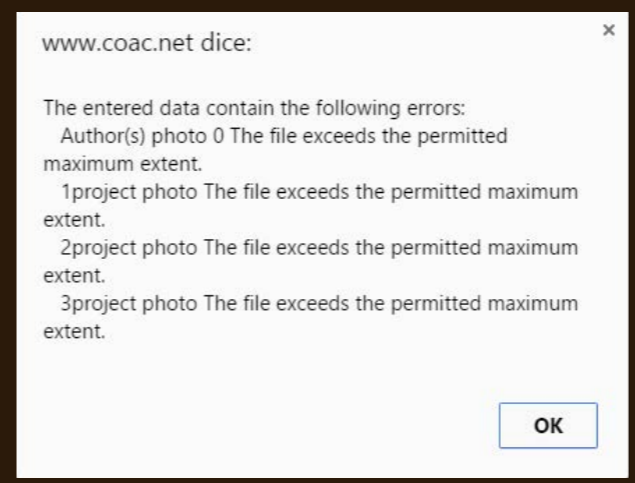
If everything is correct you will visualize on the screen another page: THE PAYMENT PAGE.

#### 7.- PAYMENT

The inscription has a price of 60€ without VAT (72,60€) for each presented project.

I have read and accept [legal conditions](#), [announcement bases](#) and [assignment of rights document](#).

Erase all data Send



**If you upload files bigger then 2MB, you will display this window and you need to go back to the nline form**

# SECOND PAGE



## Right released & Payment page

Now we have all your data and your images uploaded correctly. You will see the code of your project. You have almost finished your inscription, just two steps left: the right released upload and the inscription fee payment. If you don't see this page correctly, don't worry, check your e-mail. We have sent you your PROJECT CODE, the link of your project and the link of the payment page.

### STEP 8: THE RIGHT RELEASED

To publish your project we need the RIGHT RELEASE OF THE SUBMITTED MATERIAL.

1 - DOWNLOAD the .doc document and complete it with the name of the images you sent us and the signature of the author.

### PAYMENT

**NOTE THE CODE OF YOUR PROJECT**

CODE OF YOUR PROJECT **9550**

Participation in the International Rosa Barba Landscape Prize will be conditioned to the payment of the registration fee. The fee for 2016 call maintains pricing of the previous edition 2014 and will be 60 € (excluding VAT). So the final amount payable will be 72.60 € ( 12.60 € VAT). Exempt of VAT for those international participants attaching a certificate of exemption.

For any clarification you can call our IX International Biennial of Landscape office  
Phone: 93-301 50 00 | 93 552 08 42 extension 231 or 352

Write an e-mail: [9biennial@coac.net](mailto:9biennial@coac.net), [biennialadm@coac.net](mailto:biennialadm@coac.net)

**RIGHT RELEASED**

Right released is required to be signed by the authors of the images that are not are not the designers of the submitted projectsholders. (Eg photographers)

1- Download document right released

**RIGHT RELEASED**

2- Upload file.

Upload file

Payment Methods

1) ONLINE Payment:

Payment

iupay! VISA MasterCard Maestro

2) Bank Transfer: Make the payment in advance and Upload the bank receipt of payment made in advance by bank transfer to the CC:

BIC / SWIFT: CASDESBB / IBAN ES58 3183-0800-85-0000004234 a number of "COAC Landscape Biennial"

Scegli file Nessun file selezionato

Upload file

IX INTERNATIONAL LANDSCAPE BIENNIAL OF BARCELONA  
ROSA BARBA INTERNATIONAL LANDSCAPE PRIZE  
29<sup>th</sup>, 30<sup>th</sup> September AND 1<sup>st</sup> October 2016, Barcelona.

RELEASE OF EXPLOITATION RIGHTS OF THE SUBMITTED MATERIAL

I, AUTHOR OF THE IMAGES, Mr/Ms..... residing at..... by means of this document

DECLARE

1) That I have—in response to the invitation made by the Association of Architects of Catalonia (COAC), and the Polytechnic University of Catalonia (UPC)—I have submitted to these organizations the following images:

-  
-  
-  
-  
-

(photocopy this page if you need more space)  
(In the event of multiple authors, the corresponding relationship between author and image must be specified)

2) That I am the author and legitimate owner of all exploitation rights of said photographic material, which I release to the aforementioned organizations, exempting them from any charge or obligation, as a personal contribution to the collective work for which they are being assembled as part of the 8th International Landscape Biennial, Barcelona 2016. The material will be included in two exhibitions, stored on the Biennial's Web site, and published in a program and in a book-catalogue, which brings together the most important projects created in Europe over the past few years.

3) That the release of the exploitation rights of said material is done free of charge.

..... on the ..... of ..... of 2016

Signature: .....

Participation in the IX INTERNATIONAL LANDSCAPE BIENNIAL OF BARCELONA depends upon the acceptance of these conditions.

**NAME OF THE AUTHOR OF THE PICTURE**

**TYPE THE NAME OF THE IMAGES YOU SUBMITTED**

**MAKE SURE THE AUTHOR OF THE PICTURE SIGN THE DOCUMENT**

You can find the download link of the RIGHT RELEASED, also on this page <http://www.arquitectes.cat/en/landscape-biennale-cesi%C3%B3n-de-derechos>

2- UPLOAD the completed RIGHT RELEASED through the button "select file", and then clicking UPLOAD FILE. For any problem in the upload you can send an email to [biennialadm@coac.net](mailto:biennialadm@coac.net) with this document attached, and specifying the name and the code of your project.

### RIGHT RELEASED

Right released is required to be signed by the authors of the images that are not are not the designers of the submitted projectsholders. (Eg photographers)

1.- Download document right released

Right released

2.- Upload file.

Scegli file Nessun file selezionato

Upload file

**UPLOAD THE RIGHT RELEASED, COMPLETED AND SIGNED FROM THE AUTHOR OF THE IMAGES! And click UPLOAD.**

For any problem in the upload, you can send it by email to: [biennialadm@coac.net](mailto:biennialadm@coac.net)

## STEP 9: THE PAYMENT

### Modalitats de pagament

#### 1) ONLINE:

Pagament

iupay! VISA MasterCard Maestro

← ACCEPTED CARD!

2) TRANSFERÈNCIA: Adjuntant el comprovant d'haver fet el pagament prèviament per transferència bancària al CC:

BIC/SWIFT: CASDESBB/IBAN ES58 3183-0800-85-0000004234 a nombre de "COAC-Biennial de Paisatge"

Scegli file ROSA BARBA L. PRIZE.docx

← VERY IMPORTANT!

Pujar comprovant

← IF YOU CHOOSE A WIRE TRANSFER, REMEMBER TO UPLOAD THE RECEIPT OF YOUR PAYMENT!!

Fitxer Pujat Correctament!

The last step to conclude your inscription is the payment of the registration fee. The fee for the 2016 call is 60€ (EXCLUDING VAT). So the final amount payable will be 72,60 € (12,60 € VAT). Exempt of VAT for those international participants attaching a certificate of exemption.

We will also send you an email with your PROJECT CODE and the link to the payment page.

You can choose between two methods of payment:

#### 1) ONLINE

( Accepted card on the picture above ) - We suggest this method!

DADES DE FACTURACIÓ			
Nom	cla	Primer cognom	m
		Segon cognom	
NIF	4444444	Mail	claudiamartelli@live.it
		Telèfon	
Tipus via		Detall carrer	
		Nom carrer	
Població	reggio calabria	País	
		Província	
		Codi postal	89129
PRODUCTES			
Descripció	Import	Tipus IVA	Import amb IVA
Inscripció premi Rosa Barba	60 €	21.0%	72,6 €
TOTAL COMPRA			
Import total compra		Import total amb IVA	72,6 €

Comprar

← INSERT YOUR DATA

Complete the field with your data and finalize the payment. If the payment was successful you will automatically receive a copy of the INVOICE to your e-mail address. If the payment didn't work correctly, you will receive this e-mail, and you have to do the payment again, choosing between the two methods.

Landscape 9a edició (apli@coac.net) Add to contacts 02:55

To: Biennial

Dear/a,

The ID of your work is: 9550

Your data has been correctly recorded. If your payment wasn't succesful, no need to register again, just link to the payment page. [Payment](#)

Please view your project page to ensure everything is correct: [Project Listing](#)

Regards,  
Barcelona Landscape Biennial team.

← IF THE PAYMENT ISN'T SUCCESSFUL YOU WILL RECEIVE AN EMAIL LIKE THIS!

#### 2) WIRE TRANSFER

BIC/SWIFT: CASDESBB

IBAN ES58 3183-0800-85-0000004234

Addressed to "COAC-Biennial de Paisatge"

Type on the concept your PROJECT CODE (you visualize it in the payment page and in the email we sent you! ), NAME, SURNAME, ID NUMBER (\*for the Spanish "numero de colegiado" or NIF) and PROJECT CODE.

Remember to UPLOAD / SEND BY EMAIL TO [biennialadm@coac.net](mailto:biennialadm@coac.net) the PAYMENT RECEIPT , and write us the data of the person/society you want the invoice to be addressed to. We will send you a copy of the invoice.

For any problem or to make sure that everything is correct contact our office:

[biennialadm@coac.net](mailto:biennialadm@coac.net)  
[9biennial@coac.net](mailto:9biennial@coac.net)  
[projectemilllores.map@gmail.com](mailto:projectemilllores.map@gmail.com)

or call the number:  
+34.93.306.78.00 (ext. 231 i 352)  
+34 93 552 08 42





Avenue COAC  
 Plaça nova 5, 2<sup>nd</sup> floor  
 08002 Barcelona / Catalonia / Spain  
 Telephone: +34.93.552.08.42  
 +34.93.306.78.00 (ext. 231 i 352)

biennaladm@coac.net  
 9biennial@coac.net  
 biennial.paisatge@upc.edu  
 Biennial@coac.net

<http://www.coac.net/landscape>

Avenue ETSAB  
 Diagonal 649, 5<sup>th</sup> floor  
 08002 Barcelona / Catalonia / Spain  
 Telephone: +34 93 401 64 11

<http://www.arquitectes.cat/landscape>

**Coordination**

Marina Cervera i Alonso de Medina

**IX International Biennial Team**

Claudia Martelli  
 Maria Andreina Guzmán  
 Ibon Doval  
 Tania Vadalà  
 Qian Lyuanian  
 Wu Huan  
 Sining Zhang  
 Daniela Sánchez Sáez